



ROWAD
MODERN ENGINEERING



A large, thick red diagonal bar with a white outline, slanted from the top-left to the bottom-right, crossing through the text.

BUILDING
REALITIES™

®

A WORD FROM OUR CEO

Since our establishment in 1998, Rowad Modern Engineering has developed an unrivaled reputation built on world-class technical and commercial competencies, superior quality and value, as well as long-term relationships with both public and private sector clients, to become today one of Egypt's most reputable turnkey contractors with a strong reputation and growing business across the Middle East and Africa regions.

At Rowad, we implement the latest and most reliable technological tools to ensure dynamic and cost-effective operations. We have also invested in our subsidiaries through strategic mergers and acquisitions, integrating our scope of work while ensuring superior quality. Business excellence and project proficiency are at the core of Rowad, yet our employees are at the heart of everything we do. With over 3000 highly qualified employees, we enjoy a strong reputation for technical expertise, integrity, cooperation, and teamwork. Our people challenge themselves every day to reach the highest levels of professionalism and exceptional performance, enabling Rowad to deliver quality, value-added construction services.

As we continue to expand our reach beyond Egypt, Africa, and Saudi Arabia, we are committed to delivering sustainable services while keeping track of our carbon footprint and implementing Green Technological Solutions in all our projects.

*Mohamed
Mahlab*



TABLE OF CONTENT

ABOUT ROWAD	4	CORE VALUES	7
		<i>Safety</i>	
		<i>Quality</i>	
COMPANY HISTORY	5	OUR WORK	8
		<i>Services</i>	
		<i>Projects</i>	
COMPANY PRINCIPLES	6	PARTNERS OF SUCCESS	
<i>Our Mission</i>		<i>Subsidiaries</i>	68
<i>Our Vision</i>			
<i>Our People</i>		REGIONAL FOOTPRINT	70

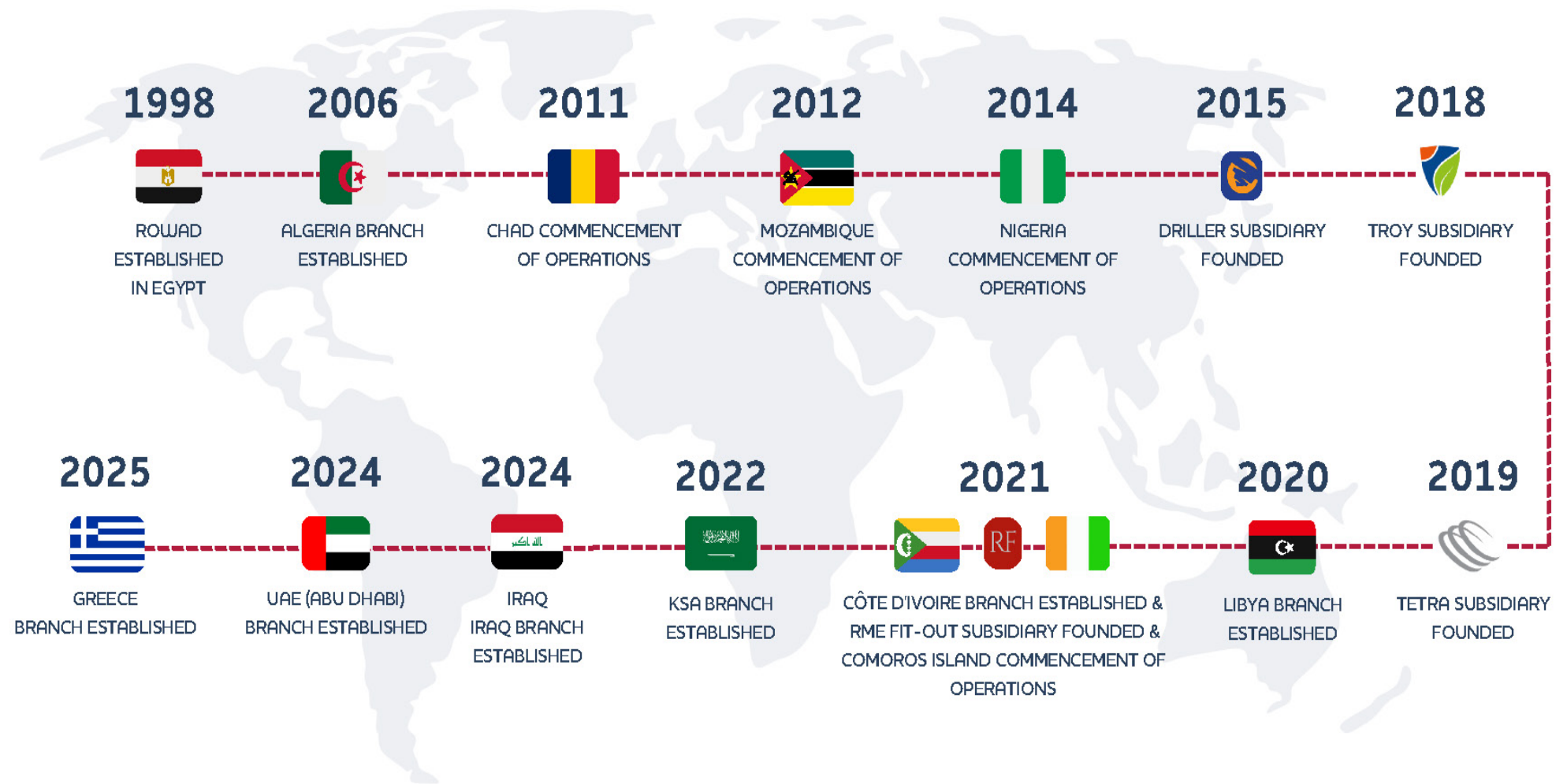
ABOUT ROWAD

Throughout Rowad's years of operations, we have been recognized as one of Egypt's most reputable turnkey contractors through diversified alliances with major international contractors, enabling the company to undertake multidisciplinary projects of high scale and complexity. Thanks to our proven track record of success, today we are perceived as a key player in a large number of mega projects conducted over the past ten years, besides our vital role in some of the world's most prominent landmarks, including the Beni Suef 4800 MW CCPP, the world's largest combined cycle power plant, the Benban Photovoltaic Solar Park, one of the world's largest solar installations, the Olympic Multi-Sports Hall, and the Ezz Rolling Mill. In addition to our well-established operations in Egypt, we have expanded our presence across Africa with successful projects in Algeria, Egypt, Mozambique, Nigeria, and The Republic of Chad, thereby gaining a strong foothold across Africa. We are currently planning to sustain Rowad operations across Saudi Arabia and beyond.

All over our operations in Egypt and outside, our scope of work boasts sectors of power generation, heavy Industries and infrastructure, bridges, commercial buildings, hospitals, hotels, educational facilities, etc.



COMPANY HISTORY



COMPANY PRINCIPLES

OUR MISSION

We are committed to delivering quality, value-added construction services and building trust-based partnerships with our customers. We accomplish this by capitalizing on our highly qualified employees, who challenge themselves every day to reach the highest levels of professionalism and exceptional performance.

OUR VISION

We recurrently become the region's first-class leading contractor through our benchmarked projects in both local and international markets, with remarkable growth in our turnover each year.

OUR PEOPLE

We believe that meaningful work and relationships emerge when high-performing teams are assembled. Hence, we are always very keen to hire individuals with a wide range of personal interests, backgrounds, and skillsets who are looking to push themselves further and solve the toughest challenges they would face.



4,000

EMPLOYEES

15,000

LABORS

CORE VALUES

SAFETY ***IS OUR TOP PRIORITY***

— Safety is not just a policy; it is a core attitude instilled in each and every member of Rowad. We believe that all construction projects can be executed in a safe manner that prevents almost all potential accidents. Accordingly, we commit to compliance with the requirements of any applicable regulations and legislation, as well as our clients' HSE policies.

Being certified in ISO 45001 and ISO 14001 is proof of Rowad's commitment to our employees' health and safety.

Safety procedures are more essential when it comes to the project's onsite construction phase, as accidents are more likely to occur within the project site. Thus, Rowad is always keen on promoting awareness of health, safety, and environmental-appropriate measures among all concerned entities in order to protect them from any potential accidents or injuries.

QUALITY ***IS WHAT WE CARE ABOUT***

— At Rowad, we consider quality to be an essential element of our work. We develop quality policies and procedures that reflect our commitment to new opportunities and ideas to optimize the level of service provided to our clients.

Rowad is ISO certified, and we have our own capabilities and experience, enabling us to achieve clients' satisfaction and fulfill their needs. Rowad has developed and implemented a Quality management System in compliance with the standards of ISO 9001. This system ensures service quality and enhances our commitment to constant development and compliance with applicable statutory, regulatory, and other requirements. We are always committed to meeting our promise to provide our services and meet the project's requirements and quality standards.



INDUSTRIAL



POWER



BRIDGES



SPECIAL BUILDINGS



RAILWAYS



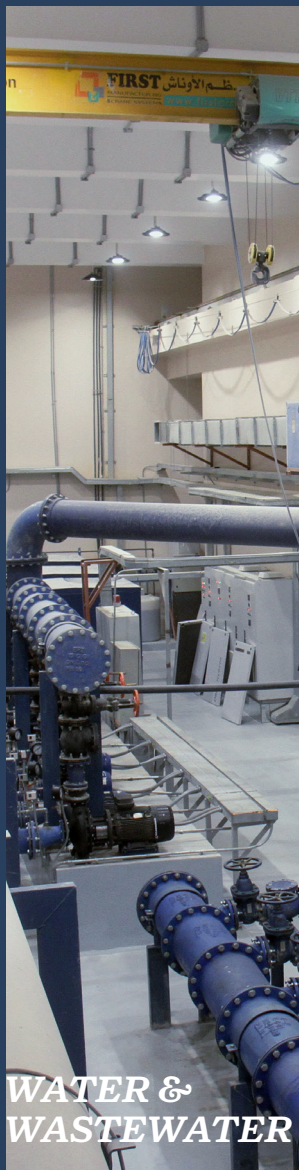
PORTS



**INFRA-
STRUCTURES**



**HERITAGE
RESTORATION**



**WATER &
WASTEWATER**

OUR SERVICES

MDF WOOD FACTORY





INDUSTRIAL

Rowad has extensive experience in various industrial projects, including cement factories and petrochemical utilities (Infra or Industrial).

MDF WOOD FACTORY PROJECT

Rowad is responsible for the construction of the Medium Density Fiberboard factory to produce the MDF wood in Egypt. The project's total land area is approximately 150,000 m².

Client: **NILE WOOD S.A.E**

Duration: **13 Months**





YADA FURNITURE MANUFACTURING HUB

Rowad is delivering Stage 1 of the YADA Furniture Manufacturing Hub in Al-Alamein, Egypt, covering early works, civil and hard finishes for the 44,278 m² Production & Storage hall, civil and façade works for the Admin Building, and full infrastructure and design scope.

Client: **YADA Egypt S.A.E**

Duration: **12 Months**

ALSTOM CABLING FACTORY

Rowad is delivering Alstom Egypt's manufacturing plant in Borg Al-Arab, Alexandria, on a 56,000 m² site. Scope includes architectural, civil, and non-process MEP works for a steel-structure main hall with essential admin and support facilities.

Client: **Alstom Egypt for Transport Projects**

Duration: **10 Months**



EGAT PELLETIZING PLANT

This project is a national and strategic one; it is the only one in the Middle East producing iron pellets from raw iron ore. Rowad is handling the supply and installation of all the civil, infrastructure, roads, and MEP works for all project areas and buildings.

Client: **EGAT**
Duration: **20 Months**



BIOLOGICALS AND BIOSIMILARS MANUFACTURING FACILITY (EIPICO 3)

A turnkey construction of the EIPICO 3 facility, one of Egypt's most advanced pharmaceutical complexes, comprising two main zones, the Critical Area (OS & DP – Process and Filling), a modular two-floor structure with a built-up area of approximately 4,750 m², and the Non-Critical Area, covering around 5,524 m² that houses utilities, administration, and service functions.

Client: **EGYPTIAN INTERNATIONAL PHARMACEUTICAL INDUSTRIES CO. (EIPICO)**
Duration: **13 Months**



MAFI FOOD COMPLEX PROJECT

Rowad is delivering the MAFI Food Complex in Sadat City, Egypt, executing architectural, civil, and finishing works, alongside non-process and process MEP systems, and the supply, installation, and commissioning of production equipment.

The complex comprises five advanced factories designed to achieve LEED Gold Certification.

Client: **MAFI for Agricultural Produce Industries, Private Free Zone**

Duration: **12 Months**

BENI SUEF CEMENT PLANT

In cooperation with Chengdu Design & Research Institute of Building Material Industry Co., Ltd., Rowad Completed the civil works of the GEO 6x6000 TPD clinker cement Plant at Benisuef and successfully completed the project.

Client: **CHENGDU DESIGN AND RESEARCH INSTITUTE OF BUILDING MATERIAL INDUSTRY CO.**

Duration: **14 Months**



PORTSAID GRAIN SILOS

Port Said Silos is a pivotal project by Rowad, standing as a beacon of Egypt's food security efforts. With a footprint of 15,000 m² and a storage capacity of 100,000 tons, these silos represent a huge step towards reducing wheat wastage and enhancing storage efficiency. Strategically located in Port Said, the project seamlessly integrates with rail lines, alleviating traffic congestion and facilitating swift and cost-effective transportation of goods across the nation.

Client: **General Company for Silos and Storage (GCSS)**

Duration: **18 Months**



SAINT GOBAIN FACTORY

Rowad is executing core packages for the AS2 Float Glass Facility in Ain Sokhna, Egypt—covering foundations and full civil/architectural works for the Furnace, Float, and Lehr buildings (including the Lehr tunnel and warehouse), PHE external and internal networks, Batch House (conveyors, cullet yards, sand storage), and Design-Build of PEB works.

Client: **Saint Gobain Egypt for Glass Industries.**

Duration: **9 Months**



EZZ DRI PLANT

DANIELI; ranked among the three largest suppliers of equipment and plants to the metal industry in the world, chose Rowad to act as the main contractor in charge of resuming and completing construction on the EZZ DRI Plant in Ein El Sokhna.

Client: **DANIELI**

Duration: **10 Months**

ELCO STEEL ROLLING MILL PLANT

As part of our continuing success in heavy civil construction projects, Rowad was appointed by ELCO Steel as the main contractor for all civil and utility construction for their new rolling mill plant in the Sokhna area.

Client: **SUEZ STEEL CO.**

Duration: **6 Months**



SIEMENS PS SERVICES CENTER- RAMSIS IIV

Rowad has been awarded the turnkey construction of the Siemens maintenance Workshop (Ramsis II). The project entails activities to build a new training, repair, and tooling facility for Siemens. This cooperation marks yet another successful cooperation between Siemens Technologies and Rowad.

Client: **SIEMENS TECHNOLOGIES**

Duration: **11 Months**



SAUDI ARABIA LOGISTICS (SAL)



Rowad is delivering the full design and construction of a large-scale warehouse facility for SAL Logistic Services at King Khalid International Airport (KKIA) in Riyadh. The project encompasses comprehensive architectural, civil, structural steel, MEP, infrastructure, landscaping, interior, road, and airport utility integration works.

Client: **SAL Logistic Service.**

Duration: **30 Months**



LOGISTICA WAREHOUSES

Rowad took responsibility for constructing a warehouse on an area of 11,500 m² with a 15 m height. Among this area, an area of 6,500 m² will be dedicated for an air-conditioned area and 5000 m² will serve as a cold store designed to work at temperatures that vary between (-20) and (+5). The warehouse also includes a 7 m high rack store, machine, utilities building, water tank, and electrical substation.

Client: **LOGISTICS**

Duration: **12 Months**

ELSEWEDY CABLES FACTORY



Rowad has cooperated with Elsewedy Electric on many projects, including the manufacturing factory in Algeria, among many others. Having a reliable presence in Algeria, Rowad could successfully complete the turnkey construction of the Elsewedy Cables factory on an area of 50,000 m².

Client: **ELSEWEDY CABLES**

Duration: **15 Months**



BENI SUEF 4800 MW COMBINED CYCLE





POWER

While Rowad has taken part in developing various power plant stations, we have been focusing on renewable energy all along by participating in the development of sustainable alternatives such as wind, solar, and renewable power plants.

BENI SUEF COMBINED CYCLE 4800 MW POWER PLANT

Rowad was responsible for all the civil works of the power blocks led by SIEMENS – ELSEWEDY consortium. The Beni Suef Combined-Cycle Power Plant Project is the largest power plant in Egypt and the MENA region with a capacity of 4800 MW.

Client: **MINISTRY OF ELECTRICITY**

Duration: **20 Months**





BENBAN PHOTOVOLTAIC SOLAR PARK

Rowad was appointed by TSK/Enviromena JV to carry out the construction works on four plots in the Benban Project with a total capacity of approximately 200 MW. The Benban Photovoltaic Solar Park is a national project aimed at increasing Egypt's electricity generation capacity through the development of solar PV projects.

Client: **TSK-ENVIROMENA JV**

Duration: **7 Months**

LEKELA 250 MW WIND FARMS

Continuing to cooperate with Siemens-Gamesa Renewable Energy, Rowad is assigned to carry out the civil works package of the wind farm project for 96 wind turbine generators (WTG's) with a total capacity of 250 MW located in Ras Gharib.

Client: **SIEMENS-GAMESA RENEWABLE ENERGY**

Duration: **14 Months**



EETC 4 SUBSTATIONS

GE and Rowad worked as a consortium for 26 months on the procurement and installation of four independent substations located in Egypt. The time frame for finishing Substation 220/66/11 KV in Mostasmereen was 8 months. Energizing Substation 500/220 KV of Ismailia East takes 20 months. Substation 500/220 KV in Beni Suef has 18 months to be completed. Substation 500/220 KV of Tamy El Amdeed, 19 months.

Client: **EETC**
Duration: **8 to 20 Months**



GABAL EL ZAYT WIND FARMS 380 MW (JICA, KFW, FIEM)

Sub-contracted by international EPC contractor Gamesa, Rowad has successfully delivered the civil works of several wind farm projects with a total capacity of over 380 MW. In cooperation with Gamesa, Rowad handles the civil construction works of the technical foundations as well as the hardstands, in addition to the design and construction of the farm's road works.

Client: **GAMESA**
Duration: **9 Months**



RABIGH CCPP EXTENSION

Rowad is executing turnkey bored piling and civil works for the Rabigh CCPP 1200 MW Extension in KSA, covering concrete, architectural, infrastructure, MEP, and electrical works—including foundations, insulation, steel structures, and mechanical networks for storm, sewage, and utilities systems.

Client: **EL-SEWEDY PSP**

Duration: **24 Months**



EXTENTSION OF ATTAQA POWER PLANT

Rowad was selected to execute the civil works for the Attaqa 650 MW simple cycle gas turbine units. Rowad has proved itself capable of completing the project within an extremely short time frame.

Client: **MINISTRY OF ELECTRICITY**

Duration: **17 Months**



DP WORLD PORT OF SOKHNA







INFRASTRUCTURES

Infrastructure is the cornerstone of the social and economic development of a country. Thanks to Rowad's longstanding know-how and experience in the construction industry, we have completed a large number of national and international infrastructure projects.

DP WORLD'S PORT OF SOKHNA CONTAINER TERMINAL BASIN 2

In cooperation with DP World, Rowad was awarded a project for the Construction of an onshore port and terminal works for a new container terminal to the southwest of the existing Basin 1 terminal.

Client: **DP WORLD AIN SOKHNA**

Duration: **28 Months**



PORT OF ALGIERS CONTAINER TERMINAL REFURBISHMENT WORK



Rowad has been awarded the upgrading and rehabilitation works for the port of Algiers container terminal. We were responsible for rehabilitating the 30H, a container terminal at Algiers currently operated by DP-World.

Client: **DP WORLD D'JAZAIR**

Duration: **55 Months**

LIGHT RAIL TRANSIT BADR DEPOT (LRT)

The National Authority of Tunnels (NAT) has awarded GAMA-Rowad Joint Venture the construction works for the LRT main line train fence and workshop buildings, which consist of 26 buildings at Badr City. The LRT is designed to accommodate 340,000 passengers daily and contribute to reducing traffic on the Cairo-Ismaïlia highway by about 30 percent.

Client: **NATIONAL AUTHORITY FOR TUNNELS**

Duration: **24 Months**



METRO ALGIERS MAINTENANCE WORK-SHOPS AND SUBSTATIONS



Based on its worldwide fame for excellence and proficiency, Rowad was entrusted with the construction of the 125,000 m² metro maintenance and garage complex in Algeria. Rowad again proved itself industry leaders by providing the highest quality and high-end complexity of civil engineering.

Client: **ALGERIAN TRANSPORTATION MINISTRY**

Duration: **15 Months**



DAMIETTA CONTAINER TERMINAL (TAHYA MISR 1)

Rowad Construction proudly contributes to the 2nd Container Terminal (Tahya Misr) at Damietta Port, spanning 930,000 square meters. Equipped with advanced STS cranes, the terminal is designed to handle even the largest vessels. Once operational, it will enhance Damietta Port's container capacity by 3.3 million TEUs annually, driving regional trade and economic growth.

Client: **DAMIETTA ALLIANCE**

Duration: **18 Months**

GOVERNMENTAL DISTRICT INFRASTRUCTURE NETWORKS

Rowad was responsible for the implementation of the infrastructure networks for the Downtown Area (GOV2) in the New Administrative Capital on an area of 1400 acres.

Client: **NEW URBAN COMMUNITIES AUTHORITY - NUCA**

Duration: **35 Months**



6TH OF OCTOBER TUNNEL JACKING

Rowad has been awarded the 6th of October Tunnel project. A project that is very detailed as it entails "the pushing process" method in order to place the tunnel under the railway. Rowad started off by building two concrete canals of 6 m height, 30 m length, and 12 m width.

Client: **NEW 6TH OF OCTOBER CITY**

Duration: **55 Months**



COASTAL PROTECTION FOR MAPUTO CITY



In cooperation with MCA Mozambique, M. Couto Alves, S.A., and M. Couto Alves, Vias, S.A., Rowad were assigned to rehabilitate and construct coastal protection for Maputo City, Mozambique. This project included establishing a new configuration system on Maputo's South Coast as well as developing criteria for both the south and south-west zones.

Client: **MCA MOZAMBIQUE SA.**

Duration: **24 Months**



MIVIDA IRRIGATION TREATMENT PLANT

In collaboration with EMAAR, Rowad was responsible for the construction of EMAAR potable water tanks, irrigation treatment plants, and infrastructure service buildings at Marassi North Coast and Uptown Cairo.

Client: **EMAAR MISR**

Duration: **15 Months**

MARASSI INLAND MARINA

Rowad has been awarded the construction works for Marassi Marina Infrastructure Networks in the North Coast of Egypt. Rowad's scope of work consists of the infrastructure works for Marassi Marina's Wet and Dry utilities.

Client: **EMAAR MISR**

Duration: **15 Months**



CAIRO - ALEXANDRIA RAILWAY UPGRADE

Rowad has been assigned by The Egyptian National Railways the Renewal works of 29 km of siding tracks, 17 km of mainline, and the renewal of station yard turnouts for main lines and sidings, including single and double slips, Common crossings, and Scissors.

Client: **EGYPTIAN NATIONAL RAILWAYS**

Duration: **27 Months**



OPEN CHANNEL EL-HAMMAM

Rowad is continuing to support economic growth through its infrastructure work. The Open Channel project in Alexandria has a capacity of 6.5 million m³ capacity and a total length of 3.9 km, transferring agricultural and sanitary drainage water for the reclamation of an area of 326 thousand acres on the Al-Dabaa axis.

Client: **EGYPTIAN ARMED FORCES**

Duration: **22 Months**



NAGAA HAMMADI BARRAGE

Rowad was subcontracted by Vinci-Bilfinger Berger and OCI JV to carry out civil construction works for one of the largest water infrastructure projects operated by the Egyptian Government.

Client: **EGYPTIAN IRRIGATION MINISTRY**

Duration: **24 Months**

ALGERIA NEW AUTOROUTE



Rowad was contracted by Cojaal, a large Japanese consortium, to carry out the construction of 46 bridges and 8 culverts in Setif, Algeria. Despite the aggressive geographical nature of the project's location.

Client: **ALGERIAN MINISTRY OF TRANSPORTATION**

Duration: **3 Months**



SOKHNA HIGHWAY - RAILWAY INTERSECTION BRIDGE

Massive concrete structure embedded in a mountainous topography, spanning 80 m in width and curved below to allow High-Speed Railway clearance, supported by 10,000 tons of steel reinforcement, 80,000 m³ of shoring systems, and 500 tons of post-tension cables. Sokhna Bridge is a detour to the Kattameya-Sokhna Highway and the Sokhna-New Cairo Capital High-Speed Railway.

Client: **EGYPTIAN ARMED FORCES**

Duration: **15 Months**



RING ROAD EXPANSION

Rowad has been awarded the construction works of the Ring Road Expansion Project in Al Mariouteya with a length of 4.1 km, in addition to another branch in El Marj with a length of 2.2 km to be completed in 12 months.

Client: **GENERAL AUTHORITY FOR BRIDGES, ROADS AND LAND TRANSPORTATION**

Duration: **12 Months**



SOKHNA PORT EXPANSION PIER 4

Rowad is responsible for the execution of the Sokhna Port Pier 4 basins' quays (2&4) and (3&5), with a length of 675 m initially. The project has been extended for another 100 m for quay 4, with a depth of 31.1 m and piles of length 36.1 m with a diameter of 1.2 m.

Client: **GENERAL AUTHORITY FOR BRIDGES, ROADS AND LAND TRANSPORTATION**

Duration: **17 Months**

SOKHNA PORT-BASIN 1 - IRON OXIDE PELLET TERMINAL CIVIL WORKS (A)

In cooperation with DP World, Rowad was awarded the turnkey construction of the iron oxide pellet terminal. This import terminal is needed in order to import the raw materials for iron oxide pellets.

Client: **DP WORLD AIN SOKHNA**

Duration: **8 Months**



WADI HALFA PORT, SUDAN



Rowad is upgrading the port breakwater in Wadi Halfa, Sudan—a ~500 m structure acting as a northern breakwater and southern quay—covering soil investigation, bathymetric surveys, dredging, demolition, and extensive rock and concrete works.

Client: **EGYPTIAN RIVER TRANSPORT AUTHORITY**

Duration: **36 Months**



HSR SOHAG STATION

Rowad is delivering turnkey civil, architectural, MEP, landscape, and road works for the Sohag HSR Station in Sohag, Egypt—a key stop on the Blue Line of Egypt's 1,100 km high-speed network. Strategically 7 km from Sohag Airport, the station features a modern three-level design and three 420-meter high-speed platforms to enable efficient passenger flow and link Upper Egypt with the rest of the country.

Client: **NATIONAL AUTHORITY FOR TUNNELS**

Duration: **18 Months**



OCTOBER DRY PORT

Rowad is delivering the railway works for the October Dry Port, covering the design, supply, and installation of 3 km of track. The scope includes K54 rails on Vossloh flangeless concrete sleepers with basalt ballast and phased tamping, K54 turnouts with bolted joints, and the study and design of mainline tracks and station yards to connect the facility to Egypt's national rail network.

Client: **October Dry Port Company**

Duration: **12 Months**

QASR RASHWAN

Rowad is executing wastewater infrastructure works in Qasr Rashwan, Fayoum, serving six villages. The scope includes 93 km of UPVC/HDPE sewer networks, 18 km of force mains, six pumping stations, and a 2,100 m³/day near-zero liquid discharge unit with advanced filtration and RO systems achieving 92% recovery.

Client: **FAYOUM WATER AND WASTEWATER**

Duration: **24 Months**



ABOU SHANAB SEWAGE NETWORKS AND PUMP STATIONS

Rowad is executing wastewater infrastructure works in Qasr Rashwan, Fayoum, serving six villages. The scope includes 93 km of UPVC/HDPE sewer networks, 18 km of force mains, six pumping stations, and a 2,100 m³/day near-zero liquid discharge unit with advanced filtration and RO systems achieving 92% recovery.

Client: **Holding Company for Water & Wastewater (Fayoum)**

Duration: **24 Months**



AL OULA INDUSTRIAL PARK

Rowad executed infrastructure works for Al Oula Industrial Park, including supplying and installing UPVC pipelines (110–400 mm, 10 bar), valves, fire hydrants, and building/factory connections, with excavation, backfilling, groundwater dewatering, and full site restoration.

Client: **ALOULA Industrial Parks.**

Duration: **48 Months**



KOUMASSI INTERSECTION FLYOVER



Rowad is constructing a 700-meter, dual two-lane flyover at the Koumassi Intersection. Scope includes demolition of existing structures, earthworks with soil shoring and piling, pavement replacement, drainage, utilities relocation, guardrails and signage, landscaping, and public lighting—redeveloping the entire crossroads.

Client: **Millennium Challenge Account**

Duration: **24 Months**

THIRD RING ROAD TRIPOLI



Rowad executed the Third Ring Road Project in Tripoli, Libya—a 24 km strategic corridor delivered in four phases from Ghut Shaal to Al-Shat Road. Scope included 35 key structures (bridges, flyovers, underpasses), 3.8 million m² of roadworks, integrated drainage, and deep foundations with over 700 piles.

Client: **LIBYAN MINISTRY OF HOUSING AND UTILITIES**

Duration: **24 Months**





AL HAER STP

Rowad is executing civil works for the Al Haer Sewage Treatment Plant in KSA, designed for a 200,000 m³/day average inflow. The scope includes construction of the main STP structures along with the Outfall Delivery, TSE Special, and Water Special Facilities.

Client: **VA Tech Wabag Limited KSA**

Duration: **15 Months**



ABO GHALEB BRIDGE

Rowad executed the turnkey construction of the Abo Ghaleb Bridge, covering piling operations, box structure construction, steel bay installation, and extensive concrete works under strict SOP standards, including precast beams, pile foundations, mono piles, and Continuous Flight Auger (CFA) pile

Client: **GENERAL AUTHORITY FOR BRIDGES, ROADS & LAND TRANSPORTATION.**

Duration: **18 Months**



HIGH SPEED RAIL DEPOT

Rowad, in a 50–50 JV with Orascom Construction, is delivering the design-and-build scope, with enabling works and full civil packages underway across 33 assets along a 620 km network. The scope includes the TRU maintenance yard, rescue-locomotive stabling, an automatic train-wash plant, water refilling with sanding silos, the REL workshop complex, stabling buildings, administration facilities, and the OCC.

Client: **National Authority for Tunnels**

Duration: **17 Months**

ALAMEIN COASTAL ROAD BRIDGE

Rowad delivered the Alamein Coastal Road Bridge for the Egyptian Armed Forces, covering earthworks, concrete works (piles, footings, columns, walls, frames, box sections, precast), insulation, bearings, expansion joints, and finishing and electrical works.

Client: **EGYPTIAN ARMED FORCES**

Duration: **3 Months**



WALDORF ASTORIA HOTEL







SPECIAL BUILDINGS

Rowad is a market leader with a firm foothold in the area of Commercial buildings, both nationally and internationally. Rowad is best known for its high-end finishing and compliance with top construction standards.

WALDORF ASTORIA HOTEL

Rowad is responsible for the rebranding and conversion of the existing 5* Tower Heliopolis Hotel into an international landmark destination, a modern (235 keys) luxury Waldorf Astoria (Hilton Group) branded hotel. Rowad's scope includes all guest rooms, suites, corridors, and lift lobbies, as well as all public areas.

Client: **GULF EGYPT FOR HOTELS & TOURISM**

Duration: **54 Months**



RADAMIS CITY

Radamis City Resort was a turnkey, fast-track construction in readiness to accommodate attendees of the 2022 United Nations Climate Change Conference in Sharm El-Sheikh (COP27).

Client: **RADAMIS FOR HOTELS & TOURISTIC RESORTS (LATIF GROUP)**

Duration: **3 Months**



IKEA MALL OF ARABIA

In collaboration with Egyptian Centers for Real Estate Development (MARAKEZ), Rowad has been awarded the turnkey construction works for IKEA's Mall of Arabia, with a total BUA of 19,836 m² located in the 6th of October city.

Client: **FAS CONSTRUCTION EGYPT**

Duration: **9 Months**



GOVERNMENTAL BUILDINGS

Rowad was awarded the completion of the construction of four ministerial buildings in the New Cairo Capital on a turnkey basis. The project represents one of Egypt's most important projects in its modern transformation and the development of Cairo New Capital.

Client: **NEW ADMINISTRATIVE CAPITAL COMPANY FOR URBAN DEVELOPMENT**

Duration: **54 Months**



OLYMPIC MULTI- SPORTS HALL

Rowad is acting as the turnkey Contractor for the construction of the Olympic multi-sports Hall, the project is a multi- sports platform with total BUA of 40,000 m² that is certified to accommodate 15,000 spectators for many Olympic Games.

Client: **EGYPTIAN ARMED FORCES**

Duration: **46 Months**

SODIC EASTOWN RETAIL AND OFFICES

SODIC, Rowad's recurring partner, trustingly awarded Rowad the construction of its new Eastown Retail and Offices complex of total BUA 154,000 m² which was considered one of the iconic commercial schemes at the New Cairo.

Client: **SODIC**

Duration: **31 Months**



NEW GIZA UNIVERSITY HOSPITAL

New Giza Hospital is a state-of-the-art tertiary healthcare facility located in New Giza Meditown Health Park. The building consists of a concrete and steel structure for skylights, and the hospital is going to be equipped with 164 beds on a BUA of 23,000 m².

Client: **NEW GIZA FOR REAL ESTATE DEVELOPMENT**

Duration: **22 Months**



KEMET TOWER

Rowad is handling all civil works for the construction of Kemet Tower. It's an administrative building consisting of two basements, a ground floor, and seven floors built on a land area of approximately 6000 m².

Client: **STATE FOR REAL-ESTATE DEVELOPMENT**

Duration: **20 Months**



SODIC ALLEGRIA CLUBHOUSE

Allegrria Clubhouse is a landmark at SODIC's Allegrria Compound at Cairo-Alex Road. For a grandiose BUA of 10,500 m², SODIC entrusted Rowad with the complete turnkey construction. The project is characterized by an elegant sense of choice of materials, ensuring the users an unforgettable, exquisite experience.

Client: **SODIC**

Duration: **29 Months**

AIR DEFENCE COLLEGE

Rowad is handling the construction of The Air Defense College, with a total scope of 288,500 m² BUA. Rowad is in charge of building The Air Defense Training Field, the Senior Year Building, the Library, and the Examination Building.

Client: **EGYPTIAN ARMED FORCES**

Duration: **23 Months**



POINT 90 MALL

Located in New Cairo, the Point 90 mall project was assigned to Rowad to carry out all construction tasks and work based on the company's solid reputation as an experienced professional contractor.

Client: **CAIRO FOR HOUSING AND DEVELOPMENT**

Duration: **10 Months**



THE KNOWLEDGE HUB UNIVERSITIES PHASE I & II

The Knowledge Hub Universities is a multidisciplinary educational hub that hosts branches of world-class universities. Rowad was responsible for the turnkey construction of the Knowledge Hub Universities.

Client: **ELSEWEDY EDUCATION**

Duration: **12 Months**



MIVIDA MY PARK

My Park is Mivida's new under-construction offices and clinic hub, consisting of four office buildings and two clinic buildings. Having the privilege of being in a premium location within Mivida's commercial quarter connected with P32, the palace, business park, and the boulevard.

Client: **EMAAR MISR**

Duration: **28 Months**

NEW GIZA UNIVERSITY PHASE I & II

Following the successful completion of the civil and electromechanical works in Phase 1 of the construction of New Giza University in the highest quality and within the time frame agreed upon, Rowad was assigned the same works for Phase 2. The areas of both phases, 1 and 2, are 20,000 m² and 20,660 m², respectively.

Client: **NEW GIZA FOR BASIC INFRASTRUCTURE AND EDUCATIONAL SERVICES**

Duration: **10 Months**



ELSEWEDY HEADQUARTERS (INTERNAL FINISHING)

Rowad is responsible for the Internal high-end finishing of a ground floor and Five typical floors for a Core and Shell building, as well as MEP equipment with a total BUA of 23,650 m².

Client: **ELSEWEDY ELECTRIC**

Duration: **12 Months**



CAIRO INTERNATIONAL AIRPORT TERMINAL 2

Renowned for high quality, experience, and excellence in providing construction services for vast projects, particularly national landmark projects, Rowad was assigned the construction of Cairo International Airport Buildings A and C.

Client: **LIMAK INSAAT**

Duration: **30 Months**



MPORIUM MARASSI

Rowad was responsible for the renovation of MPorium, the construction of the EMAAR Sales Center, and structural parking at Marassi North Coast. Rowad proved itself qualified by successfully executing the project to the highest quality standards and safety regulations.

Client: **EMAAR MISR**

Duration: **4 Months**

NEW MANSOURA UNIVERSITY

The New Mansoura University project consists of 8 lecture rooms that have a unique system of sound isolation as well as being prepared with the most recent "Data Showing" technology and fireproofed labs with a total BUA of 40,000 m².

Client: **NEW URBAN COMMUNITIES AUTHORITY - NUCA**

Duration: **24 Months**



URBN-K

In continuation of Rowad's collaboration with Starlight Developments to complete construction of Katameya Creeks, Rowad is awarded URBN-K, Katameya Creeks' mixed-use commercial complex. It will house landmark office spaces, a boutique hotel, and high-street boutique retail outlets, divided into seven buildings connected by a pedestrian boulevard and signature landscape.

Client: **STARLIGHT DEVELOPMENT**

Duration: **13 Months**



WESTTOWN ENTERTAINMENT HUB

Rowad was entrusted with the execution and completion of SODIC's Westtown entertainment hub. Acting as the main contractor, Rowad was responsible for remedying any defects related to the civil works, MEP, and infrastructure works pertaining to Westtown Entertainment Hub.

Client: **SODIC**

Duration: **12 Months**



N'DJAMENA GRAND HOTEL RADISSON BLU (CURRENTLY)



Rowad was awarded the civil works for the N'Djamena Hotel, located in the capital of The Republic of Chad. The project is built on a total area of 38,000 m². Using the most modern techniques, Rowad carried out the project using precast in-situ beams and slabs.

Client: **CFE INTERNATIONAL**

Duration: **12 Months**

SEASHELL PLAYA

The Playa Seashell Resort project on the North Coast is a new multi-purpose urban development project that aims to provide a high-end residential service that enjoys a healthy environment for its residents. The project's total BUA is 955,826 m².

Client: **MIDDLE EAST FOR INVESTMENT AND TOURISTIC INVESTMENT**

Duration: **74 Months**



KATAMEYA CREEKS

Katameya Creeks units are built on varying areas and in different designs in a modern-classic style, surrounded by green spaces on all sides. Rowad has been awarded the construction work for the prestigious urban development project.

Client: **STARLIGHT DEVELOPMENT**

Duration: **38 Months**



R05

Rowad is the turnkey Contractor for the massive R05 mix-use complex with a BUA of over 800,000 m², part of the Ministry of Housing, Utilities, and Urban Communities' plan to support and attract investments into new cities. The scope includes the full construction of seven towers, five clusters, and supporting facilities.

Client: **NEW URBAN COMMUNITIES AUTHORITY (NUCA)**

Duration: **54 Months**



CFC PODIUM II

Entrusted by Al-Futtaim Commercial and Administrative Centers (AFCAC), Rowad has been awarded the construction of CFC podium 2, located in New Cairo, Egypt. The project consists of five office buildings, for which Rowad is responsible for delivering the full concrete skeleton and façade works.

Client: **ALFUTTAIM COMMERCIAL & ADMINISTRATIVE CENTERS**

Duration: **19 Months**

ROYAL CITY MALL

Rowad was awarded the construction of the Royal City Mall, located on 120,000 m² in Giza Governorate. The built-up area of the mall is approximately 25,000 m² and the building represents a landmark on the main axis of Sheikh Zayed district with a 500 m facade and a new modern-style retail complex.

Client: **BABTAIN EGYPT**

Duration: **48 Months**



HOSH EISSA HOSPITAL

The Hosh Eissa Hospital project by Rowad is a comprehensive healthcare facility spanning 24,970 m² across five floors. It houses critical departments like Emergency, Labs, Inpatient, Maternity, and ICU, ensuring global patient care. Additionally, it includes specialized units for services such as Endoscopy, Neonatal Care, and Hemodialysis, meeting diverse medical needs efficiently.

Client: **MINISTRY OF HEALTH & POPULATION**

Duration: **24 Months**



ZED TOWERS PHASE 1&2

Rowad has been awarded the construction works for Package A and Package D for the ZED Towers Project. Package A comprises the Basement (two levels) and four fully finished Residential Buildings (G+10), Four double-core buildings. Package D comprises the basement under the piazza, and the MEP works for the entire basement.

Client: **ORA DEVELOPMENT EGYPT FOR REAL-ESTATE INVESTMENT S.A.E**

Duration: **35 Months**



UPTOWN CAIRO VILLAGE “SIERRAS”

Entrusted by Emaar Misr, Rowad was appointed to carry out the turnkey construction of Uptown Cairo signature residential complex, Village F (West) "Sierras", phases 2 and 3, on a total area of 65,000 m² comprising 11 buildings.

Client: **EMAAR MISR**

Duration: **56 Months**

LE GALAWA HOTEL RESORT IN COMOROS ISLANDS

Rowad is entrusted with the full EPC contract for Le Galawa, a 5-star resort with an extraordinary location overlooking the Indian Ocean and surrounded by tropical green cover and palm trees on a total plot area of 88,708 m², and a BUA of 122,219 m². The resort's capacity is 110 suites and rooms with variable areas. Our scope includes complete onshore civil works and offshore engineering and management activities.

Client: **ELSEWEDY PSP BAHRAIN / UNION OF COMOROS GOVERNMENT**

Duration: **18 Months**



MOHAMED ALI PALACE RESTORATION





HERITAGE RESTORATION

Rowad is dedicated to monument restoration and historic preservation services. In cooperation with governmental bodies and international consultants, we carry out the full renovation and restoration of mesmerising and valuable architectural and historical structures and buildings.

MOHAMED ALI PALACE

Mohamed Ali's Palace is considered to be one of the first significant structures in Shubra, which led to the consecutive changes that the district later underwent. Rowad was honored to work on the restoration and rehabilitation of The Fountain Palace, or El-Faskeyya.

Client: **MINISTRY OF TOURISM AND ANTIQUITIES**

Duration: **39 Months**



SULTANA MALAK PALACE

Rowad is responsible for the structural repair, adaptive reuse, and restoration of Sultana Malak Palace, located in Heliopolis, Egypt. The palace is prepared to be the headquarters for training the youth on modern means of technology under the supervision of the Ministry of Communications and Information Technology.

Client: **MINISTRY OF COMMUNICATIONS AND INFORMATION TECHNOLOGY**

Duration: **22 Months**



EL-MENOUFY HOUSE (TAREK ABDEL-HAKIM CENTER)

Rowad is entrusted by the KSA Ministry of Culture with the full renovation and adaptive re-use of the historic El-Menoufy house in Jeddah, to be transformed as an exhibition for Hijazi music under the name of Tarek Abdel-Hakim Center.

Client: **MINISTRY OF CULTURE IN KSA**

Duration: **7 Months**



EL SET WASEELA HOUSE

The Hosh Eissa Hospital project by Rowad is a huge 200 beds healthcare facility spanning 24,970 m² across five floors. It houses critical departments like Emergency, Labs, Inpatient, Maternity, and ICU, ensuring global patient care. Additionally, it includes specialized units for services such as Endoscopy, Neonatal Care, and Hemodialysis, meeting diverse medical needs efficiently.

Client: **MINISTRY OF CULTURE**

Duration: **8 Months**



JAWHAR AL-LALA MOSQUE

The Prince Jawhar Al-Lala Mosque, the educational institution of the sons of Sultan Al-Ashraf Barsbay, bears all the features of the structures of the Circassian Mamluk era, despite its small size compared to the facilities of that era. Rowad handled its restoration to its original condition.

Client: **EGYPTIAN ARMED FORCES**

Duration: **12 Months**



QANIBAY AL-RAMMAH MOSQUE

The Qanibay Al-Rammah Amir Akhor Mosque, located in the Citadel Square, is one of the finest buildings of the Circassian Mamluk era. The facility was built per the system of schools with orthogonal planning and is distinguished by its unique style and construction. Rowad is working on its restoration to its original condition.

Client: **EGYPTIAN ARMED FORCES**

Duration: **4 Months**



RED SEA MUSEUM (BAB AL BUNT)

The Red Sea Museum project entails the transformation of the historic Bab-al-Bunt building, located in Jeddah's Al-Balad area, into a cultural landmark. Originating around 1869, the building initially featured coral stone construction, later enhanced with a reinforced concrete canopy and an additional storey between 1930-1940. Rowad's initiative involves preserving the building's rich history while expanding it into a cultural hub for the Red Sea Museum.

Client: **The Saudi Arabian Ministry of Culture**

Duration: **24 Months**

AHMED IBN SHAABAN MOSQUE

Located in the El-Batneya area of Old Cairo, this beautiful mosque was established by Judge Ahmed Hafiz Pacha in the 15th Century. Rowad restored the great building to its original condition.

Client: **MINISTRY OF CULTURE**

Duration: **8 Months**



DRILLER



Established in 2015, Driller is pioneering specialized contractor in advanced deep foundation works, shaping Egypt and the region's construction eco-systems. With state-of-the-art equipment, the company excels in handling diverse Fast Track projects, regardless of their geographical location, size or complexity, delivering around 100 projects across the country. Driller's team of more than 250 personnel delivers cost-efficient, tailored solutions with high-quality standards and strict environmental safety policies, making a lasting impact on the construction industry.

TETRA



Provides specialized Design & Build construction services, leveraging extensive in-house expertise, including a design team with over 10 years of experience in post-tensioning.

This allows for the development of optimal, cost-effective solutions focused on enhancing quality and extending the lifespan of structures. A collaborative approach is employed, where client objectives are carefully analyzed to determine the most effective and efficient project strategy.

TROY



A Greek-Egyptian company specializing in building insulation and protective finishes (founded 2018), secured a significant investment from Rowad in early 2019. This partnership is designed to expand TROY's market presence across Egypt, Africa, and the Middle East. The increased capital has strengthened TROY's capabilities, enabling it to meet growing demand and solidify its position in the industry. This strategic move reflects Rowad's dedication to innovation and high-quality building protection.

FIT-OUT



A specialized arm dedicated to delivering high-end, fast-track fit-out projects. Born from a need for luxurious finishing services, Fit-out expertly handles interior and exterior finishes, along with associated MEP (Mechanical, Electrical, and Plumbing) and comprehensive landscaping. Leveraging the robust support of Rowad, Fit-out maintains impeccable delivery quality as its benchmark. With a keen eye for detail, the division caters to the diverse demands of the finishing industry, striving for ultimate client satisfaction.

ROWAD INVESTMENT



Rowad Investment strategically invests in diverse sectors, focusing on sustainable growth and long-term value creation. We identify and develop high-potential opportunities across a broad range of ventures, encompassing both projects and multi-use properties. We leverage innovation and operational excellence, partnering with promising ventures to foster sustainable practices and build lasting impact.

ROWAD RAILWAY SOLUTIONS (RRS)



RRS, Rowad Modern Engineering's new Saudi Arabian subsidiary launched in partnership with IROLLI, is focused on leading railway infrastructure development across the Kingdom and beyond. With secured registrations, strong partnerships, and active projects, RRS delivers advanced rail solutions aligned with Saudi Vision 2030—backed by Rowad's regional expertise in construction and transportation.

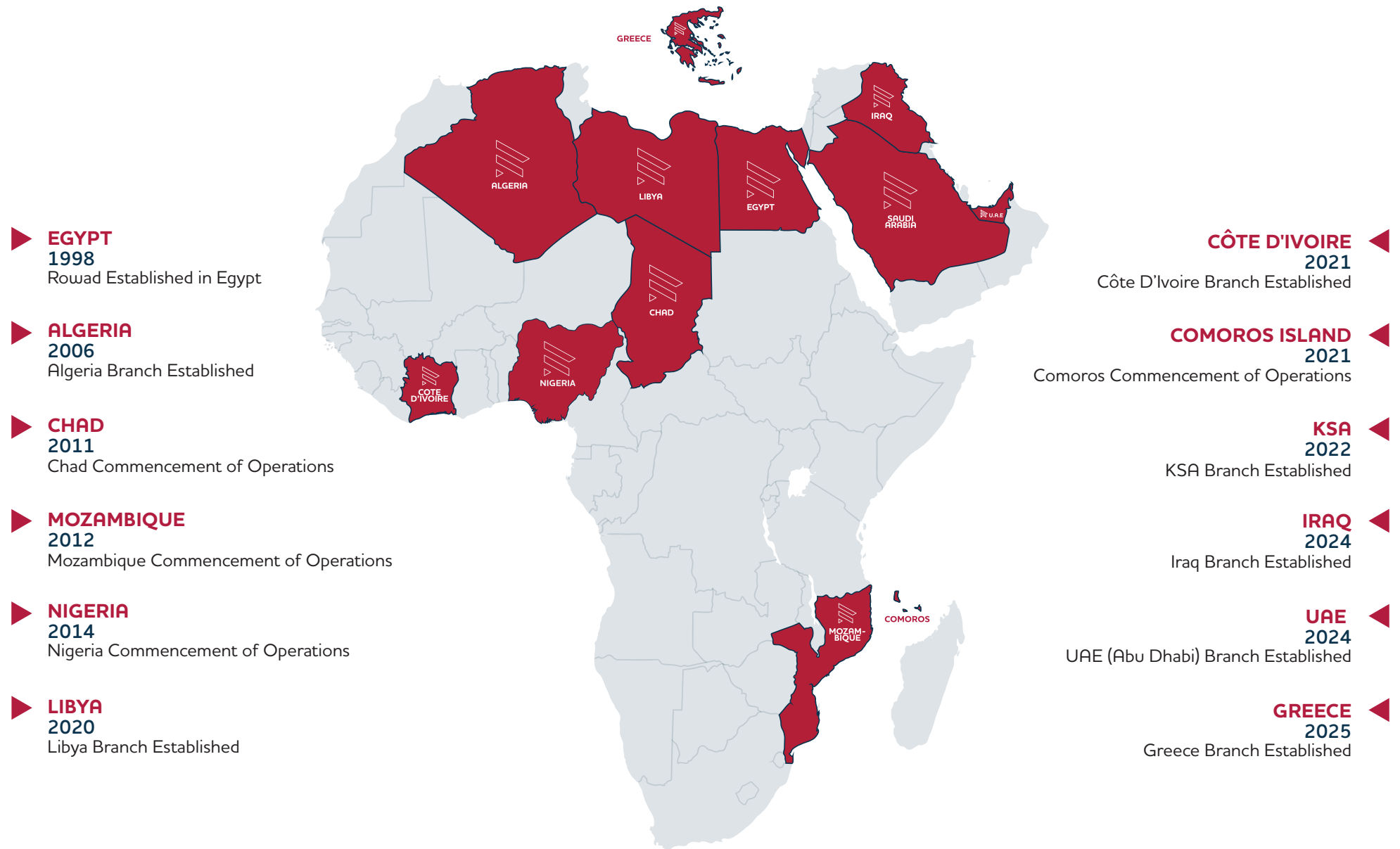
REGIONAL FOOTPRINT

Rowad has identified and prioritized key stakeholder groups and implemented engagement activities that serve environmental, talent, and human sustainability.

Through our CSR strategic projects, we have developed The Women Empowerment Educational Program to support the building of an internal pipeline of qualified women for management and senior leadership level positions in collaboration with UN Women, joined the WEPs (Women Empowerment Principles by UN Women) Signatories list, and implemented an action plan that worked on increasing employee awareness regarding the topic.

Executed different environmental CSR activities and encouraged employees to volunteer in those activities, like the Wadi Degla Protectorate Clean Up event, and worked on implementing waste disposal management systems in the head office and on construction sites.

Conceptualized a diverse bundle of customized programs to upskill casual labor, aiming for social and economic empowerment of marginalized groups like casual labor and technicians at the Central Agency for Reconstruction training facilities.



BUILDING REALITIES™



t +2 02 23581518

f +2 02 23588037

o Building 8, SODIC EDNC - Eastown District, Cairo - Egypt

w www.rowad-rme.com

